



**THE  
GLOVE  
CATALOG**

**HIGH DEXTERITY**

**HYBRID**

**WORK**

**CHEMICAL / DISPOSABLES**

**GARDENING**

**WINTER**

**AUTOMOTIVE**

**CLC**  
WORK GEAR



**UNRIVALED  
INNOVATION,  
CRAFTSMANSHIP  
AND DURABILITY**

Welcome to the CLC work glove catalog. Our latest glove offering, right here at your fingertips. Inside you'll find a broad selection of styles for a multitude of applications. We've added our CLC Pit Crew® automotive gloves plus many more new items. Our product designers have worked tirelessly to create some classic styles with innovative features that fit the needs of even the most discerning consumer. We've selected the right materials and use tested construction techniques to give you superior wear. Our factory craftsmen and women have taken great care in building each item to ensure quality throughout. And, not only are our products built right, stylish and functional, they fit right, too. We take great pride in being a leader in the work glove category. We're constantly striving to earn your business and we work hard to gain your trust every day. Thank you for choosing CLC.





## TABLE OF CONTENTS

### HIGH DEXTERITY 4 - 9

- › Flex Grip 4 - 7
- › Flex Grip Sportsman 6
- › Flex Grip XC 8 - 9

### HYBRID 12 - 13

- › Hybrid 12 - 13
- › Hybrid Winter 13

### WORK 16 - 22

- › Drivers 16 - 17
- › Leather Palm 17 - 19
- › String Knits 19 - 21
- › Cotton 21 - 22

### CHEMICAL/DISPOSABLES 27 - 29

- › Disposables 27
- › PVC 28
- › Latex 28
- › Nitrile 29
- › Neoprene 29

### GARDENING 32 - 33

### WINTER 36 - 37

### AUTOMOTIVE 40 - 41

### MERCHANDISERS 42 - 44

### INDEX 45



# CLC HIGH DEXTERITY

CLC Flex Grip gloves deliver an unmatched blend of style, function and quality. They're form-fitted for added dexterity and reduced fatigue. We use quality materials and time-tested construction methods to make this dynamically styled line the best-of-the-best in high dexterity gloves. Our Syntrex™ synthetic palm material provides increased abrasion resistance for better wear. And our Stretch-Fit™ thumb feature and spandex back combine for a better fitting glove with greater flexibility.



Syntrex™ synthetic palm material for increased abrasion and tear resistance.

Padded palm, fingers and knuckles provide protection against bumps.

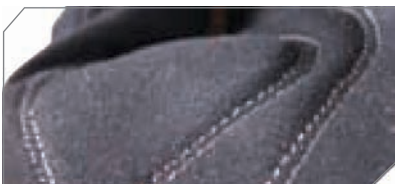
Padded cuff with medical grade hook & loop closure and textured pull-on tab.

Stretch-Fit™ thumb for a better fit and greater flexibility.

Terry-wipe thumb helps gently remove sweat or debris from face

Ring-Cut™ feature easily converts to “fingerless” glove of your choice.

### » KEY CATEGORY FEATURES



Durable synthetic leather palms.



Moisture wicking polyester spandex backs.



Snug fitting medical grade hook and loop wrist closures.



Reinforced finger tips and knuckle area.



Terry cloth thumb for perspiration management.



Reinforced wear points on XC gloves.



Extra grip palm for package handling.



Comfortable neoprene wrist.



Super TPR protection.



**124**

sizes: M, L, XL

**WorkRight™**

- › Padded synthetic palm material is soft and comfortable to wear
- › Elastic cuff with hook & loop closure and textured pull-on tab
- › Reinforced fingertip pads provide added abrasion resistance
- › Padded knuckles for protection against bumps
- › Stretch spandex back for flexibility and fit



**125**

sizes: S, M, L, XL, XXL

**Handyman™**

- › Syntrex™ synthetic palm material for increased abrasion and tear resistance
- › Padded palm, fingers and knuckles provide protection against bumps
- › Textured fingertip pads provide added abrasion resistance
- › Stretch-Fit™ thumb and spandex back for a better fit and greater flexibility
- › Wide elastic cuff with medical grade hook & loop closure and textured pull-on tab



**123**

sizes: M, L, XL

**WorkRight OC™**

- › Padded synthetic palm material is soft and comfortable to wear
- › Open cuff design with textured pull-on tab for easy-on, easy-off
- › Textured fingertip pads provide added abrasion resistance
- › Padded knuckles for protection against bumps
- › Stretch spandex back for flexibility and fit



**L123**

sizes: L, XL



**WorkRight Winter™**

- › Cold weather insulated for warmth
- › Padded synthetic palm material is soft and comfortable to wear
- › Open cuff design with textured pull-on tab for easy-on, easy-off
- › Textured fingertip pads provide added abrasion resistance
- › Padded knuckles for protection against bumps
- › Stretch spandex back for flexibility and fit





128

sizes: M, L, XL

**HiVisibility™**

- › High visibility spandex with retro-reflective fingertips and strap closure
- › Padded palm and knuckles provide protection against bumps
- › Syntrex™ synthetic palm material for increased abrasion and tear resistance
- › Stretch-Fit™ thumb and spandex back for a better fit and greater flexibility
- › Wide elastic cuff with medical grade hook & loop closure helps keep debris out
- › Textured fingertip pads provide added abrasion resistance



135

sizes: M, L, XL

**Boxer™**

- › Silicone palm print provides better grip on smooth surfaces
- › Syntrex™ synthetic palm material for increased abrasion and tear resistance
- › Fingertip pads provide added abrasion resistance
- › Stretch-Fit™ thumb and spandex back for a better fit and greater flexibility
- › Wide elastic cuff with medical grade hook & loop closure and textured pull-on tab



130

sizes: S, M, L, XL, XXL

**Subcontractor™**

- › Ring-Cut™ feature easily converts to "fingerless" glove of your choice
- › Syntrex™ synthetic palm material for increased abrasion and tear resistance
- › Padded palm, fingers and knuckles provide protection against bumps
- › Stretch-Fit™ thumb for a better fit and greater flexibility
- › Padded cuff with medical grade hook & loop closure and textured pull-on tab
- › Terry-wipe thumb helps gently remove sweat or debris from face



145

sizes: S, M, L, XL, XXL

**Tradesman™**

- › Syntrex™ synthetic palm material for increased abrasion and tear resistance
- › Reinforced padded palm and fingertips for enhanced wear and durability
- › Padded fingers and knuckles provide protection against bumps
- › Fist-Flex™ inserts and Stretch-Fit™ thumb for a better fit and greater flexibility
- › Full neoprene cuff with medical grade hook & loop closure and textured pull-on tab
- › Terry-Flex™ thumb helps gently remove sweat or debris from face





**M125**

sizes: M, L, XL

**Backcountry™**

- › Syntrex™ synthetic palm material for increased abrasion and tear resistance
- › Textured fingertip pads provide added abrasion resistance
- › Padded palm, fingers and knuckles provide protection against bumps
- › Stretch spandex back for comfort and flexibility
- › Textured, reinforced fingertip pads for increased abrasion



**ML125**

sizes: L, XL

**Timberline™**

- › Thinsulate® lining provides warmth without bulk
- › Syntrex™ synthetic palm material for increased abrasion and tear resistance
- › Padded palm and knuckles provide protection against bumps
- › Elastic cuff with medical grade hook & loop closure
- › Fingertip pads provide added abrasion resistance
- › Stretch spandex back for flexibility and fit



**M173**

sizes: M, L, XL

**Wilderness™**

- › Insulated liner helps keep hands dry and warm
- › XtraCoverage™ palm is reinforced for added abrasion resistance and better grip
- › Padded knuckles provide protection against bumps
- › Full neoprene cuff with medical grade hook & loop closure
- › Terry-Flex™ thumb to remove sweat and debris from face





165

sizes: L, XL, XXL

**Energy™**

- › Cut-resistant Kevlar® finger gussets and palm with gripper dots
- › TPR finger and knuckle pads for added bump and pinch protection
- › Energy absorbing padding on back of hand spreads impact shock
- › Neoprene and TPR-padded cuff with hook & loop closure
- › Form-fitted design increases dexterity and reduces fatigue
- › Abrasion resistant stitching



133

sizes: M, L, XL

**Workman™**

- › Syntrex™ synthetic palm material for increased abrasion and tear resistance
- › Leather fingertip pads for added abrasion resistance
- › Padded palm, fingers and knuckles provide protection against bumps
- › Stretch-Fit™ thumb and spandex back for a better fit and greater flexibility
- › Full neoprene cuff with medical-grade hook & loop closure and textured pull-on tab
- › Terry-wipe thumb helps gently remove sweat or debris from face



177

sizes: M, L, XL

**Heavy Duty™**

- › Pattern-molded, reinforced rubber palm for extra wear and durability
- › Syntrex™ palm material for increased comfort and tear resistance
- › Padded fingers and knuckles for protection against bumps
- › Full neoprene cuff with hook and loop closure and textured pull-on tab
- › Stretch-Fit™ thumb and spandex back for flexibility and fit
- › Terry-wipe thumb helps gently remove sweat or debris from face



149

sizes: M, L, XL

**Workman Pro™**

- › Full grain leather palm is strong yet lightweight with good abrasion resistance
- › Reinforced padded palm and fingertips for enhanced wear and durability
- › Padded fingers and knuckles provide protection against bumps
- › Fist-Flex™ inserts and Stretch-Fit™ thumb for a better fit and greater flexibility
- › Full neoprene cuff with medical grade hook & loop closure and textured pull-on tab
- › Terry-Flex™ thumb helps gently remove sweat or debris from face





**140**

sizes: M, L, XL

**Pro Framers XC™**

- › XtraCoverage™ palm is reinforced for added abrasion resistance and better grip
- › Fingerless design for better dexterity and feel for small parts and nails
- › Full neoprene cuff with medical grade hook & loop closure and textured pull-on tab
- › Stretch-Fit™ thumb and spandex back for flexibility and fit



**160**

sizes: M, L, XL, XXL

**Contractor XC™**

- › XtraCoverage™ palm is reinforced for added abrasion resistance and better grip
- › Padded fingers and knuckles for protection against bumps
- › Terry-wipe thumb helps gently remove sweat or debris from face
- › Full neoprene cuff with medical grade hook & loop closure and textured pull-on tab
- › Stretch-Fit™ thumb and spandex back for flexibility and fit



**190**

sizes: M, L, XL

**Airflow XC™**

- › XtraCoverage™ palm is reinforced for added abrasion resistance and better grip
- › Padded fingers and knuckles provide protection against bumps
- › Terry-Flex™ thumb helps gently remove sweat or debris from face
- › Full neoprene cuff with medical grade hook & loop closure and textured pull-on tab
- › Stretch-Fit™ thumb for a better fit and cool mesh back for greater comfort



126

sizes: M, L, XL

**WorkRight XC™**

- › XtraCoverage™ palm is reinforced for added abrasion resistance and better grip
- › Elastic cuff with hook & loop closure helps keep debris out
- › Padded knuckles for protection against bumps
- › Stretch spandex back for flexibility and fit
- › Textured pull-on tab



151

sizes: M, L, XL

**Tradesman XC™**

- › XtraCoverage™ palm is reinforced for added abrasion resistance and better grip
- › Padded fingers and knuckles provide protection against bumps
- › Terry-Flex™ thumb helps gently remove sweat or debris from face
- › Full neoprene cuff with medical grade hook & loop closure and textured pull-on tab
- › Fist-Flex™ inserts and Stretch-Fit™ thumb for a better fit and greater flexibility



173

sizes: M, L, XL



**Thunder XC™**

- › Insulated liner helps keep hands dry and warm
- › XtraCoverage™ palm is reinforced for added abrasion resistance and better grip
- › Padded fingers and knuckles
- › Fist-Flex™ inserts and Stretch-Fit™ thumb for a better fit and greater flexibility.
- › Full neoprene cuff with medical grade hook & loop closure and textured pull-on tab.



175

sizes: M, L, XL

**Demolition XC™**

- › XtraCoverage™ palm is reinforced for added abrasion resistance and better grip
- › Heavy-duty padded knuckles provide protection against bumps
- › Full neoprene cuff with medical grade hook & loop closure and textured pull-on tab
- › Breathable mesh and stretch spandex back for comfort and flexibility
- › Textured, reinforced fingertip pads for increased abrasion resistance
- › Terry-Flex™ thumb to remove sweat or debris from face





# CLC HYBRID™

We've taken premium grade leather and married it with breathable, stretch spandex to give the ultimate in comfort and performance. Our Hybrid line is truly a synergistic blend of materials that work better together providing durability and comfort along with a strikingly stylish look and solid feel. Once you've tried our Hybrid gloves, you may never go back to traditional work gloves.



## HYBRID

HYBRID

Reinforced textured palm pads and fingertips for better grip and durability.

Molded TPR wrist closure for perfect adjustments.

Top grain goatskin leather.

Breathable spandex back for flexibility and fit.

Keystone thumb with gusset stitching.

Stretchable lycra side panels for improved dexterity.



### » KEY CATEGORY FEATURES



High performance leather palms.



Lightweight/breathable spandex backs.



Top grain goatskin palms.



Reinforced palms and fingers.



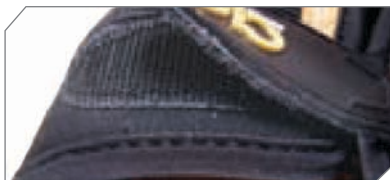
Snug knit wrist.



Neoprene comfort wrist.



Durable and protective rubberized safety cuff.



Snug fitting hook and loop wrist closures.



Leather knuckle reinforcement and protection.



**260**

sizes: M, L, XL

**Suede Palm with Knit Wrist**

- › Breathable spandex back
- › Keystone thumb with gusset stitching
- › Stretchable lycra finger side panels
- › Knit wrist for a snug fit



**265**

sizes: M, L, XL

**Suede Palm Safety Cuff**

- › Breathable spandex back
- › Keystone thumb with gusset stitching
- › Stretchable lycra finger side panels
- › Cotton back and wrist



**270**

sizes: M, L, XL

**Top Grain Goatskin Safety Cuff**

- › Breathable spandex back
- › Neoprene-padded knuckle
- › Stretchable lycra finger side panels
- › Keystone thumb with gusset stitching



**275**

sizes: M, L, XL

**Top Grain Goatskin and Spandex**

- › Neoprene wrist with hook and loop wrist closure
- › Leather patched foam-padded knuckle
- › Stretchable lycra finger side panels
- › Reinforced palm and fingertips



**280**

sizes: M, L, XL

**Top Grain Goatskin with Liner**

- › Neoprene wrist with hook and loop wrist closure
- › Water resistant internal liner
- › Stretchable lycra finger side panels
- › Spandex finger panels for extra comfort



**285**

sizes: M, L, XL

**Top Grain Deerskin and Spandex**

- › Neoprene wrist with hook and loop wrist closure
- › Reinforced leather patches throughout
- › Stretchable lycra finger side panels
- › Reinforced palm and fingertips



**2067**

sizes: M, L, XL

**Top Grain Goatskin Palm**

- › Premium top grain goatskin palm
- › Neoprene padded knuckle
- › Palm-side hook and loop wrist closure
- › Wing thumb



**2066**

sizes: M, L, XL

**Top Grain Deerskin Palm**

- › Premium top grain deerskin palm
- › Neoprene padded knuckle
- › Palm-side hook and loop wrist closure
- › Wing thumb

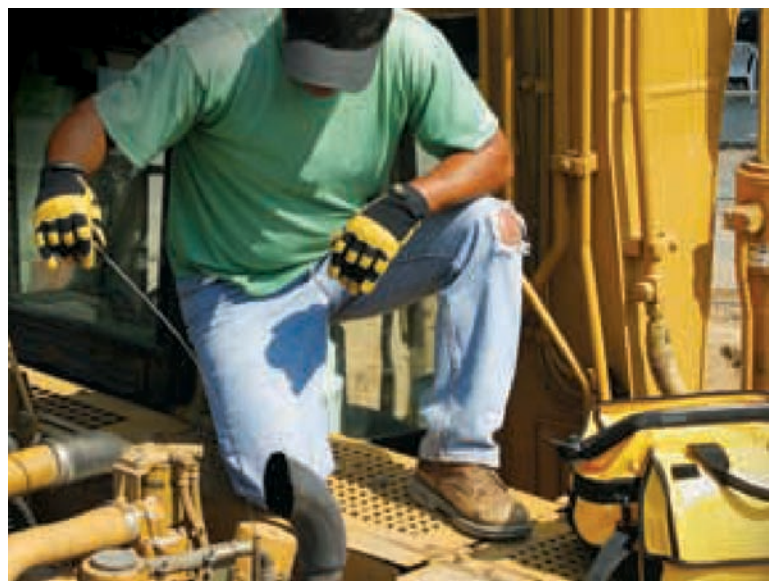


**273**

sizes: M, L, XL

**Top Grain Goatskin Open Cuff**

- › Breathable spandex back
- › Leather knuckle
- › Stretchable lycra finger side panels
- › Shirred wrist



**› WINTER HYBRIDS**



**2061**

sizes: L, XL

**Top Grain Goatskin and Spandex**

- › Premium top grain goatskin
- › Comfortable spandex back
- › 3M® Thinsulate™ Insulation, C40 gram
- › Wing thumb

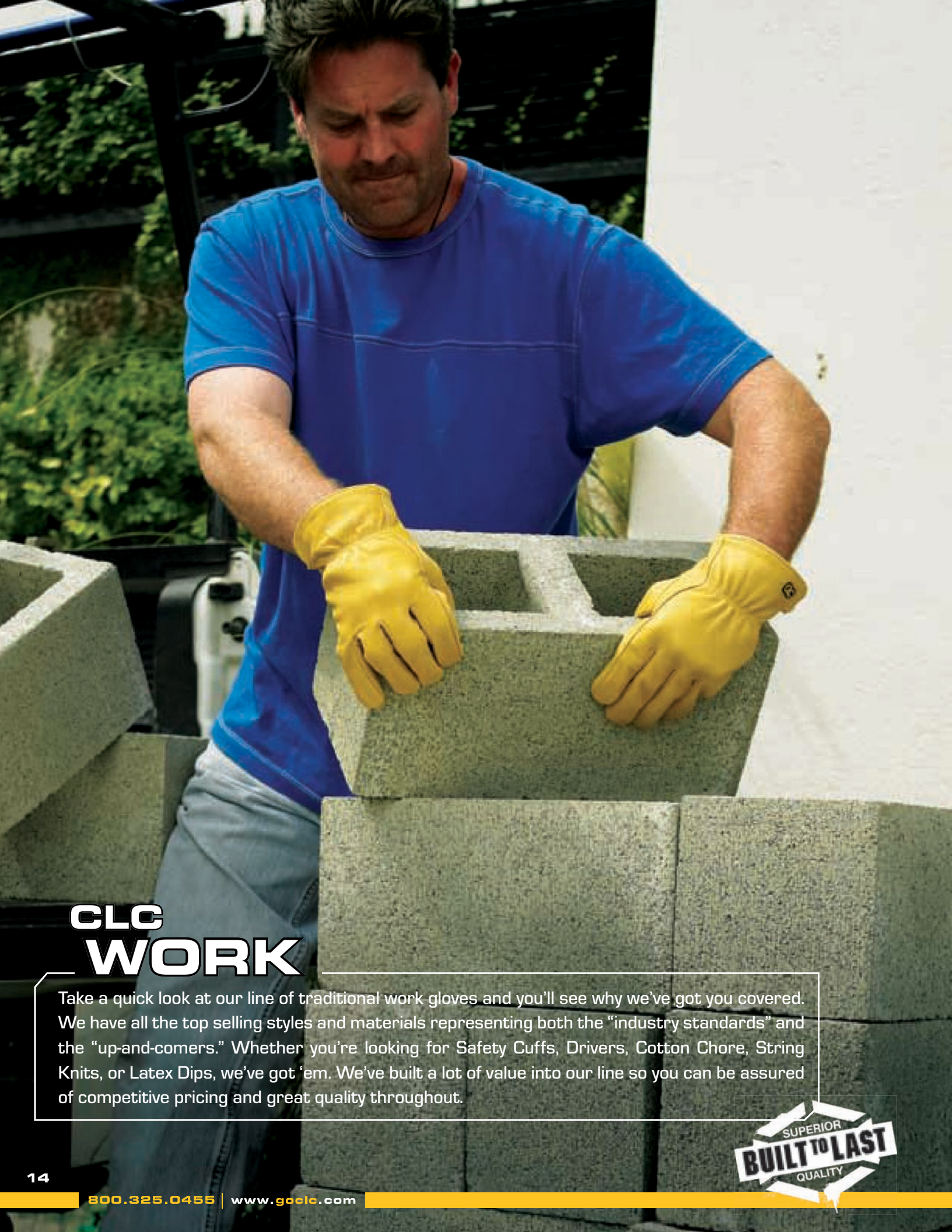


**2062**

sizes: L, XL

**Goatskin Snow Gloves**

- › Premium goatskin snow glove
- › Water resistant liner
- › 3M® Thinsulate™ Insulation, C40 gram
- › Keystone thumb



## CLC WORK

Take a quick look at our line of traditional work gloves and you'll see why we've got you covered. We have all the top selling styles and materials representing both the "industry standards" and the "up-and-comers." Whether you're looking for Safety Cuffs, Drivers, Cotton Chore, String Knits, or Latex Dips, we've got 'em. We've built a lot of value into our line so you can be assured of competitive pricing and great quality throughout.





# #2053

## TOP GRAIN COWHIDE LEATHER DRIVER

# #2030

## LATEX DIP GLOVES

Reinforced suede leather palm patch for extra durability.

Shirred wrist with leather binding.

Natural latex rubber dip palm for wear and grip.

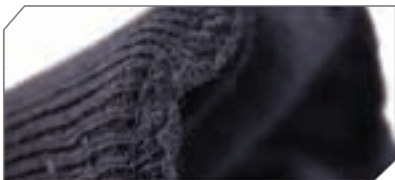
Keystone thumb for comfort and flexibility.

Cotton/polyester knit shell for comfort and breathability.

Elasticized wrist for better fit.



### » KEY CATEGORY FEATURES



Overlock knit wrist enforcement.



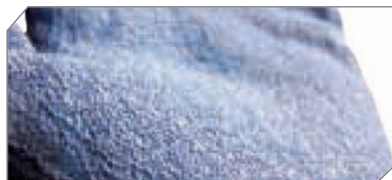
PVC dots for improved grip and wear.



Rubberized safety cuff.



Knit wrist for comfort.



Crinkle latex "Gripper" palm and fingers for wear and grip.



Leather palm patch for reinforcement.



Choose from a variety of leather species for comfort and wear.



Leather wrist strap closure.



High performance cut resistant Kevlar®.

WORK



**2054**

sizes: M, L, XL

**Economy Split Cowhide Driver**

- › Split cowhide leather
- › Straight thumb
- › Shirred wrist with cotton binding
- › Gunn cut



**2057**

sizes: M, L, XL

**Split Cowhide Driver**

- › Split cowhide leather
- › Keystone thumb
- › Adjustable tape and ball closure
- › Gunn cut



**2055**

sizes: M, L, XL

**Split Cowhide Driver**

- › Split cowhide leather
- › Keystone thumb
- › Shirred wrist with leather binding
- › Gunn cut



**2064**

sizes: M, L, XL

**Top Grain and Suede Combo Driver**

- › Top grain cowhide palm
- › Split cowhide back
- › Keystone thumb
- › Shirred wrist



**2065**

sizes: S, M, L, XL

**Top Grain Cowhide Driver**

- › Top grain cowhide
- › Keystone thumb
- › Shirred wrist with cotton binding
- › Gunn cut



**2053**

sizes: S, M, L, XL, XXL

**Heavy Duty Top Grain Cowhide Driver**

- › Split cowhide leather palm patch
- › Keystone thumb
- › Shirred wrist with leather binding
- › Gunn cut



**2069**

sizes: M, L, XL

**Top Grain Pigskin Driver**

- › Top grain pigskin
- › Keystone thumb
- › Palm patch
- › Shirred wrist with leather binding



**2060**

sizes: M, L, XL

**Top Grain Goatskin Driver**

- › Premium top grain goatskin
- › Keystone thumb
- › Palm patch
- › Shirred wrist with leather binding



**2063**

sizes: M, L, XL

**Top Grain Deerskin Driver**

- › Premium top grain deerskin
- › Keystone thumb
- › Gunn cut
- › Shirred wrist with leather binding



**2058**  
sizes: M, L, XL

**Top Grain Cowhide Driver**

- › Premium top grain cowhide
- › Keystone thumb
- › Palm patch
- › Hook and loop wrist closure



**kids**  
**2090**  
ONE SIZE

**Kids Safety Cuff**

- › Economy split leather
- › Straight thumb
- › Rubberized Cuff



**kids**  
**2091**  
ONE SIZE

**Kids Split Cowhide Driver**

- › Split cowhide leather palm
- › Keystone thumb
- › Shirred wrist



**2036**  
ONE SIZE

**Leather Palm**

- › Economy split leather palm
- › Cotton back and wrist
- › Clute cut
- › Straight thumb



**2037**  
ONE SIZE

**Split Cowhide Leather Palm**

- › Split cowhide leather palm
- › Heavy weight cotton back
- › Clute cut
- › Wing thumb



**2040**  
sizes: M, L, XL

**Split Cowhide Safety Cuff**

- › Split cowhide leather palm
- › 2 1/2" rubberized safety cuff
- › Shirred wrist
- › Wing thumb



**2046**  
ONE SIZE

**Economy Safety Cuff**

- › Economy split leather palm
- › Cotton back and wrist
- › Rubberized cuff
- › Wing thumb



**2046B**  
ONE SIZE

**Economy Safety Cuff**

- › Economy split leather palm
- › Rubberized cuff
- › Sold in bulk (12 prs/pack-no headers)
- › Wing thumb



**PK2044**  
ONE SIZE

**4-Pack Split Cowhide Safety Cuff**

- › Economy split leather palm
  - › Cotton back and wrist
  - › Rubberized cuff
  - › Wing thumb
- PK2046** - 2 Pack



**2042**  
ONE SIZE

**Heavy Duty Safety Cuff**

- › Split cowhide leather palm
- › Heavy weight cotton back
- › Knuckle strap
- › Wing thumb



**2047**  
ONE SIZE

**Double Leather Palm Safety Cuff**

- › Split cowhide double leather palm
- › Cotton back and wrist
- › Rubberized cuff
- › Wing thumb



**2049B**  
ONE SIZE

**Double Leather Palm Safety Cuff**

- › Economy split leather 2 piece palm
- › Rubberized cuff
- › Sold in bulk (12 prs/pack-no headers)
- › Wing thumb



**PK2047**  
ONE SIZE

**Double Leather Palm Safety Cuff**

- › Double leather palm and thumb
- › Rubberized cuff
- › Cotton back and wrist
- › Wing thumb



**2051**  
sizes: M, L, XL

**Safety Cuff with Kevlar® Stitching**

- › Split cowhide leather palm
- › Heavy weight cotton back
- › Kevlar® stitching for added strength
- › Wing thumb



**2050**  
ONE SIZE

**Double Leather Palm Safety Cuff**

- › Premium split cowhide double palm
- › Heavy weight cotton back
- › Rubberized cuff
- › Wing thumb



**2052**  
ONE SIZE

**Goatskin Safety Cuff Gloves**

- › Top grain goatskin leather palm
- › Heavy weight cotton back
- › Rubberized cuff
- › Wing thumb



**2048**  
sizes: L, XL

**Leather Palm with 4.5" Safety Cuff**

- › Split cowhide leather palm
- › 4½" extended gauntlet safety cuff
- › Rubberized cuff
- › Wing thumb



**2150L**  
sizes: L

**Hi-Viz Safety Cuff**

- › Split leather palm
- › Light reflective knuckle and fingertips
- › Hi-Viz nylon back
- › Wing thumb



**2089**

sizes: L

**Welder's Glove**

- › Split cowhide welders glove
- › 14" flared gauntlet cuff
- › Wing thumb with full sock lining
- › Gunn cut



**2010**

ONE SIZE

**Economy String Knit**

- › Cotton/polyester knit
- › Wear on either hand
- › Elasticized wrist
- › Used as glove or liner



**2019B**

ONE SIZE

**Heavy Weight String Knit**

- › Cotton/polyester knit
- › Wear on either hand
- › Sold in bulk (12 prs/pack-no headers)
- › Used as glove or liner



**2000**

ONE SIZE

**White String Knit Gloves**

- › Bleached cotton/polyester knit
- › Wear on either hand
- › Elasticized wrist
- › Used as glove or liner



**2005**

ONE SIZE

**Knit Gloves with PVC Dots**

- › PVC grip dots on both sides
- › Cotton/polyester knit
- › Elasticized wrist
- › Reversible



**PK2005**

ONE SIZE

**3-Pack Knit Gloves with PVC Dots**

- › PVC grip dots on both sides
- › Cotton/polyester knit
- › Elasticized wrist
- › Reversible



**2035**

sizes: M, L, XL

**PVC Coated String Knit**

- › Nylon/acrylic blend knit shell
- › PVC overlay for grip
- › Elasticized wrist
- › Reversible



**2028B**

sizes: L

**String Knit with Red Latex Dip**

- › Light weight knit shell
- › Latex dip palm
- › Sold in bulk (12 prs/pack-no headers)
- › Flat finish on palm



**2029**

sizes: M, L, XL

**String Knit Gripper**

- › Economy knit shell
- › Latex dip palm
- › Elasticized wrist
- › Flat finish on palm



**2026**

sizes: M, L, XL

**Polyurethane Dip Gloves**

- › Seamless nylon liner
- › Polyurethane dip
- › Extra light weight
- › High dexterity



**2030**

sizes: S, M, L, XL

**Economy Latex Gripper Gloves**

- › Cotton/polyester knit shell
- › Natural latex rubber dip palm
- › Elasticized wrist
- › Crinkled finish on latex palm



**P2030**

sizes: S, M, L, XL

**3-Pack Latex Dip**

- › Cotton/polyester knit shell
- › Natural latex rubber dip palm
- › Elasticized wrist
- › Crinkled finish on latex palm



**2031**

sizes: K, S, M, L, XL

**Latex Gripper Gloves**

- › Spandex knit shell
- › Elasticized wrist
- › Crinkled latex palm



**2033**

sizes: K, S, M, L, XL

**Nitrile Coated String Knit**

- › Nylon knit shell
- › Nitrile dip palm
- › Elasticized wrist



**2137**

sizes: M, L, XL

**Foam Nitrile String Knit Gripper**

- › Nylon knit shell
- › Foam nitrile dip palm
- › Elasticized wrist



**2027**

sizes: M, L, XL

**Kevlar® String Knit Gripper**

- › Kevlar® cut resistant shell
- › Latex dip palm
- › Elasticized wrist



**2008**

ONE SIZE

**Brown Jersey Gloves**

- › Standard weight brown jersey
- › Cotton/polyester blend
- › Knit wrist
- › Straight thumb



**PK2014**

ONE SIZE

**6-Pack Brown Jersey**

- › Standard weight brown jersey
- › Cotton/polyester blend
- › Knit wrist
- › Straight thumb

**PK2008** - 3 Pack



**2009**  
ONE SIZE

**Brown Jersey with PVC Dots**

- › Standard weight brown jersey
- › Cotton/polyester blend
- › PVC gripper dots on palm and thumb
- › Straight thumb



**2018L**  
ONE SIZE

**Brown 100% Cotton Jersey**

- › Heavy weight brown jersey
- › 100% cotton
- › Sold in bulk (12 prs/pack-no headers)
- › Straight thumb



**2011**  
ONE SIZE

**Black Jersey Gloves**

- › Heavy weight black jersey
- › Cotton/polyester blend
- › Overlock knit wrist construction
- › Straight thumb



**2012**  
ONE SIZE

**Black Jersey with PVC Dots**

- › Heavyweight black jersey
- › Cotton/polyester blend
- › PVC grip dots
- › Straight thumb



**2002**  
ONE SIZE

**Economy Cotton Canvas Gloves**

- › Standard weight cotton canvas
- › Cotton/polyester
- › Clute cut with knit wrist
- › Straight thumb



**PK2007**  
ONE SIZE

**6-Pack Cotton Canvas**

- › Standard weight cotton canvas
- › Cotton/polyester
- › Clute cut with knit wrist
- › Straight thumb



**2004**  
ONE SIZE

**Cotton Canvas Gloves**

- › Standard weight cotton canvas
- › Cotton/polyester
- › Overlock black knit wrist
- › Straight thumb



**2006**  
ONE SIZE

**Cotton Canvas with Gripper Dots**

- › Standard weight cotton canvas
- › Cotton/polyester
- › PVC grip dots/Overlock knit wrist
- › Straight thumb



**PK2006**  
ONE SIZE

**3-Pack Cotton Canvas with Gripper Dots**

- › Standard weight cotton canvas
- › Cotton /polyester
- › PVC grip dots
- › Overlock knit wrist



**2020**  
ONE SIZE

**Economy Chore Gloves**

- › Standard weight chore glove
- › Cotton/polyester blend
- › Knit wrist
- › Straight thumb



**PK2023**  
ONE SIZE

**6-Pack Economy Chore Gloves**

- › Standard weight chore glove
- › Cotton/polyester blend
- › Knit wrist
- › Straight thumb



**2022**  
ONE SIZE

**Flannel Chore Gloves**

- › Medium weight chore glove
- › Cotton/polyester blend
- › Overlock knit wrist
- › Straight thumb



**2021**  
sizes: L, XL

**Double Layer Chore Gloves**

- › Heavy weight chore glove
- › Cotton/polyester blend
- › Clute cut
- › Straight thumb



**2016**  
ONE SIZE

**Camo Jersey**

- › Standard weight jersey
- › Cotton/polyester
- › Clute cut with knit wrist
- › Straight thumb





### Cuff Styles

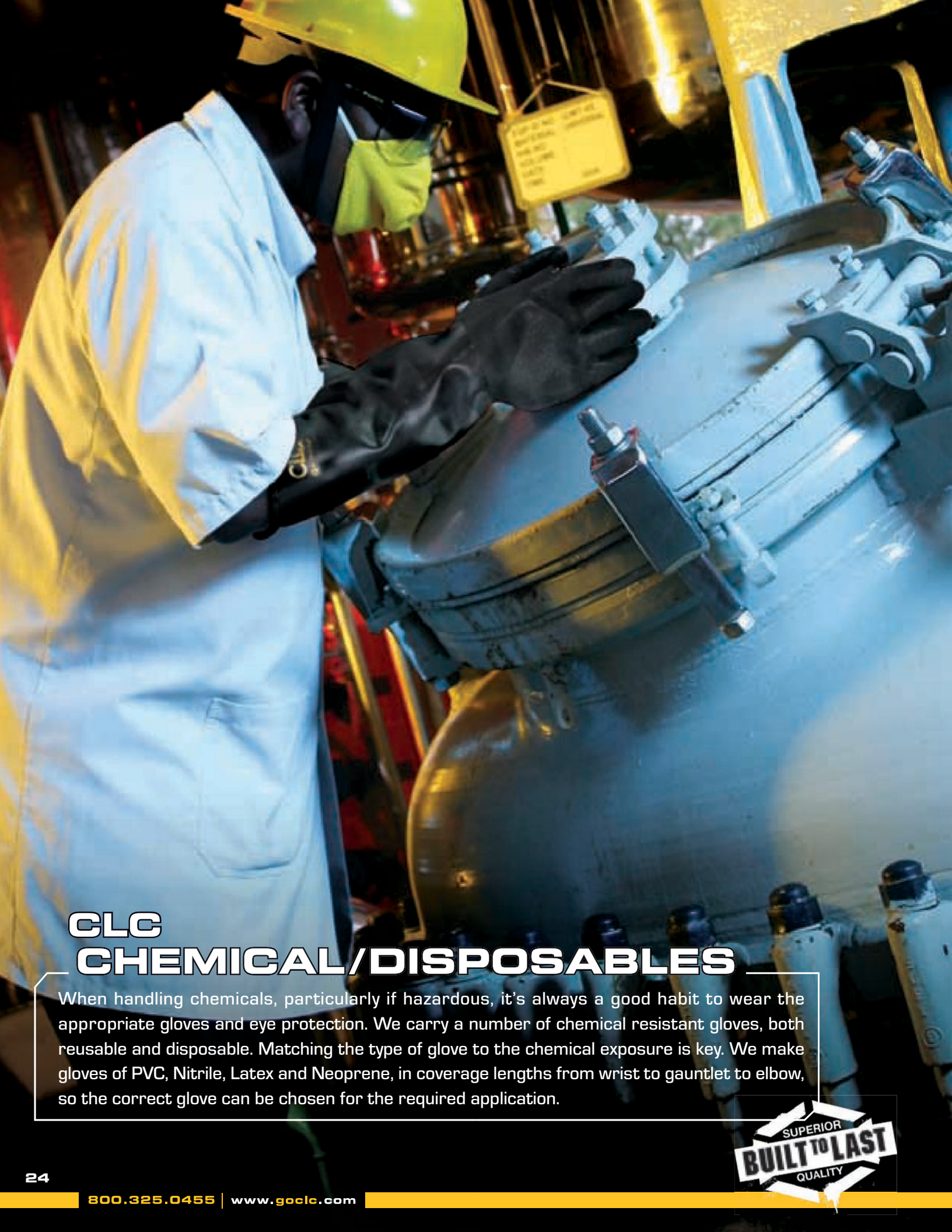


### Thumb Styles



### Glove Characteristics





## CLC CHEMICAL/DISPOSABLES

When handling chemicals, particularly if hazardous, it's always a good habit to wear the appropriate gloves and eye protection. We carry a number of chemical resistant gloves, both reusable and disposable. Matching the type of glove to the chemical exposure is key. We make gloves of PVC, Nitrile, Latex and Neoprene, in coverage lengths from wrist to gauntlet to elbow, so the correct glove can be chosen for the required application.



#2322

**NITRILE DISPOSABLE GLOVES**

Rolled wrist.

Tough nitrile latex-free material.

Industrial grade 4 mil.

Actifresh® antibacterial treatment

#2080

**PVC KNIT WRIST GLOVES**

Fully dipped PVC from fingertips to the wrist.

Comfortable knit wrist to keep debris out.

» **KEY CATEGORY FEATURES**



Extra strength dips for wear and grip.



Actifresh™ antibacterial treatment for repeated usage.



Industrial grade disposable gloves in your choice of vinyl, latex or nitrile.



Comfortable knit wrist.



Extended gauntlet cuffs for added protection.



Disposable gloves have rolled cuffs for easy pull on and removal.

# CHEMICAL RESISTANCE CHART

CHEMICAL	NITRILE	LATEX	PVC	NEOPRENE
Acetic Acid	G	G	G	M
Acetone	P	P	P	P
Aluminum Chloride	M	M	M	M
Ammonium Fluoride	M	M	M	M
Ammonium Hydroxide	M	M	M	M
Amyl Acetate	M	M	M	M
Amyl Alcohol	M	M	M	M
Aniline	M	M	M	M
Animal Fats	M	M	M	M
Battery Acid	M	M	M	M
Benzaldehyde	M	M	M	M
Benzene	M	M	M	M
Benzyl Alcohol	M	M	M	M
Benzyl Chloride	M	M	M	M
Butane	M	M	M	M
Butyl Acetate	M	M	M	M
Butyl Alcohol	M	M	M	M
Calcium Hypochlorite	M	M	M	M
Carbolic Acid	M	M	M	M
Carbon Disulfide	M	M	M	M
Carbon Tetrachloride	M	M	M	M
Castor Oil	M	M	M	M
Chlorine (dry)	M	M	M	M
Chlorine (wet)	M	M	M	M
Chloroacetone	M	M	M	M
Chlorobenzene	M	M	M	M
Chloroform	M	M	M	M
Chloronaphthalene	M	M	M	M
Chlorothene® VG	M	M	M	M
Chromic Acid	M	M	M	M
Citric Acid	M	M	M	M
Cottonseed Oil	M	M	M	M
Creosote	M	M	M	M
Cutting Oil	M	M	M	M
Cyclohexane	M	M	M	M
Cyclohexanol	M	M	M	M
Diacetone Alcohol	M	M	M	M
Dibenzyl	M	M	M	M
Dibutyl Phthalate	M	M	M	M
Diethylamine	M	M	M	M
Dio-Isobutyl Ketone	M	M	M	M
Di-Isocyanate	M	M	M	M
Diethyl Formamide	M	M	M	M
Diethyl Sulfoxide, DMSO	M	M	M	M
Dioxane	M	M	M	M
Dyestuff	M	M	M	M
Epoxy Resins	M	M	M	M
Ethyl Acetate	M	M	M	M
Ethyl Alcohol	M	M	M	M
Ethyl Ether	M	M	M	M
Ethyl Formate	M	M	M	M
Ethylene Dichloride	M	M	M	M
Ethylene Glycol	M	M	M	M
Ethylene Trichloride	M	M	M	M
Fluorine	M	M	M	M
Formaldehyde	M	M	M	M
Formic Acid 90%	M	M	M	M
Freon TF	M	M	M	M
Furfural	M	M	M	M
Gasoline	M	M	M	M
Glycerin	M	M	M	M
Hexane	M	M	M	M
Hydraulic Fluid-Petroleum	M	M	M	M
Hydraulic Fluid-Ester	M	M	M	M
Hydrazine 65%	M	M	M	M
Hydrobromic Acid	M	M	M	M
Hydrochloric Acid 38%	M	M	M	M
Hydrochloric Acid 10%	M	M	M	M
Hydrofluoric Acid 48%	M	M	M	M
Hydrogen Peroxide 30%	M	M	M	M
Hydroquinone	M	M	M	M
Insecticides	M	M	M	M
Isobutyl Alcohol	M	M	M	M
Iso-Octane	M	M	M	M
Isopropyl Alcohol	M	M	M	M
Kerosene	M	M	M	M
Lacquer Thinner	M	M	M	M
Lactic Acid	M	M	M	M
Lard	M	M	M	M
Lauric Acid 36% EtOH	M	M	M	M
Linoleic Acid	M	M	M	M
Linseed Oil	M	M	M	M
Lubricating Oil (Petro)	M	M	M	M
Maleic Acid	M	M	M	M
Methyl Acetate	M	M	M	M
Methyl Bromide	M	M	M	M
Methyl Cellosolve	M	M	M	M
Methyl Chloride	M	M	M	M
Methyl Ethyl Ketone	M	M	M	M
Methyl Formate	M	M	M	M
Methyl Isobutyl Ketone	M	M	M	M
Methylamine	M	M	M	M
Methyl Methacrylate	M	M	M	M
Mineral Oil	M	M	M	M
Mineral Spirits (Rule 66)	M	M	M	M
Monoethanolamine	M	M	M	M
Morpholine	M	M	M	M
Muriatic Acid	M	M	M	M
Naphtha	M	M	M	M
Nitric Acid-70%	M	M	M	M
Nitric Acid-10%	M	M	M	M
Nitric Acid-Red Fuming	M	M	M	M
Nitric Acid-White Fuming	M	M	M	M
Nitrobenzene	M	M	M	M
Nitromethane	M	M	M	M
Nitropropane 95.5%	M	M	M	M
Nonyl Alcohol	M	M	M	M
Nonyl Acid	M	M	M	M
Olive Oil	M	M	M	M
Oxalic Acid	M	M	M	M
PCB's	M	M	M	M
Paint Remover	M	M	M	M
Palmitic Acid Saturate	M	M	M	M
Pentane	M	M	M	M
Perchloric Acid 60%	M	M	M	M
Perchloroethylene	M	M	M	M
Phenol	M	M	M	M
Phosphoric Acid	M	M	M	M
Pickling Solution	M	M	M	M
Picric Acid	M	M	M	M
Pine Oil	M	M	M	M
Plating Solutions-Chrome	M	M	M	M
Potassium Hydroxide 50%	M	M	M	M
Printing Ink	M	M	M	M
Propane	M	M	M	M
Propyl Acetate	M	M	M	M
Propyl Alcohol	M	M	M	M
Propylene Oxide	M	M	M	M
Rubber Solvent	M	M	M	M
Silicon Etch	M	M	M	M
Sodium Hydroxide 50%	M	M	M	M
Sodium Hypochlorite	M	M	M	M
Soybean Oil	M	M	M	M
Stearic Acid	M	M	M	M
Stoddard Solvent	M	M	M	M
Styrene	M	M	M	M
Sulfuric Acid (diluted)	M	M	M	M
Sulfuric Acid 95%	M	M	M	M
Tannic Acid 65%	M	M	M	M
Tetrahydrofuran	M	M	M	M
Toluene	M	M	M	M
Toluene Di-Isocyanate	M	M	M	M
Trichlorethylene	M	M	M	M
Triethanol Amine	M	M	M	M
Trinitrotoluene	M	M	M	M
Tung Oil	M	M	M	M
Turbine Oil	M	M	M	M
Turpentine	M	M	M	M
Vegetable Oil	M	M	M	M
Vinyl Chloride	M	M	M	M
Xylene	M	M	M	M

**KEY**

- Excellent
- Good
- Fair
- Poor
- Insufficient Data
- Not Recommended

The Chemical Resistance Chart is provided as a guide for qualified professionals who recommend, select, specify or otherwise determine the suitability of products for worker safety. As such, the Chemical Resistance Chart is advisory only. The suitability of a product for a specific application must be determined and tested by the purchaser.



**2312**  
Pre-Powdered  
**2314**  
Non-Powdered

sizes: S, M, L, XL

**Vinyl Disposable Box**

- › 5 mil. Industrial grade
- › Rolled cuff
- › Solid vinyl
- › 100 Gloves per box



**2316**  
Pre-Powdered  
**2318**  
Non-Powdered

sizes: S, M, L, XL

**Latex Disposable Box**

- › 5 mil. Industrial grade
- › Rolled cuff
- › Latex
- › 100 Gloves per box



**2320**  
Pre-Powdered  
**2322**  
Non-Powdered

sizes: S, M, L, XL

**Nitrile Disposable Box**

- › 4 mil. Industrial grade
- › Rolled cuff
- › Nitrile
- › 100 Gloves per box



**2325**  
ONE SIZE

**Vinyl Disposable Pre-Powdered**

- › 5 mil. Industrial grade
- › Rolled cuff
- › Solid vinyl
- › 10 Gloves per bag



**2328**  
ONE SIZE

**Latex Disposable Pre-Powdered**

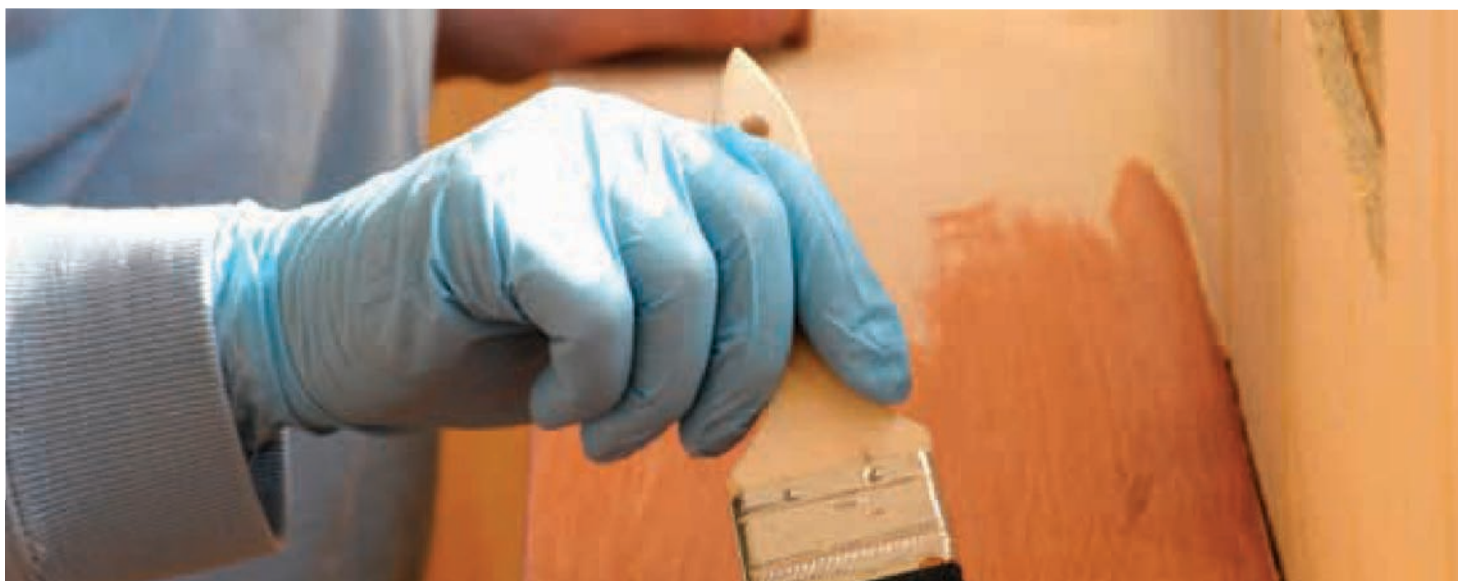
- › 5 mil. Industrial grade
- › Rolled cuff
- › Latex
- › 10 Gloves per bag



**2331**  
ONE SIZE

**Nitrile Disposable Pre-Powdered**

- › 4 mil. Industrial grade
- › Rolled cuff
- › Nitrile
- › 10 Gloves per bag





**2080L**

sizes: L

**PVC Knit Wrist**

- › Smooth finish PVC
- › Actifresh® cotton jersey liner\*
- › Knit wrist
- › Single dip

**PK2080** - 2 Pack PVC Knit Wrist



**2082L**

sizes: L

**PVC 12" Gauntlet Cuff**

- › Double dipped PVC
- › Actifresh® cotton jersey liner\*
- › 12" gauntlet cuff
- › Sandy finish on hand



**2083L**

sizes: L

**PVC 14" Gauntlet Cuff**

- › Double dipped PVC
- › Actifresh® cotton jersey liner\*
- › 14" gauntlet cuff
- › Sandy finish on hand



**2084L**

sizes: L

**PVC 18" Gauntlet Cuff**

- › Double dipped PVC
- › Actifresh® cotton jersey liner\*
- › 18" gauntlet cuff
- › Sandy finish on hand



**PK2083**

ONE SIZE

**2 Pack PVC 14" Gauntlet Cuff**

- › Double dipped PVC
- › Actifresh® cotton jersey liner\*
- › 14" gauntlet cuff
- › Sandy finish on hand



**2308**

sizes: M, L, XL

**Single Pack Orange Latex Stripper**

- › Heavy weight latex
- › Cotton flock lining
- › Embossed grip
- › 12" Gauntlet cuff



**2300**

sizes: S, M, L, XL

**Single Pack Yellow Latex Cleaning**

- › Yellow latex
- › Cotton flock lining
- › Embossed grip
- › 12" Gauntlet cuff



**P2300**

sizes: S, M, L

**Three Pack Yellow Latex Cleaning**

- › Yellow latex
- › Cotton flock lining
- › Embossed grip
- › 12" Gauntlet cuff
- › 3 Pairs per bag



**2333**

sizes: M, L, XL

**Neoprene Over Latex**

- › Blue neoprene over yellow latex
- › Cotton flock lining
- › Embossed grip
- › 12" Length



**2086L**  
sizes: L

**Neoprene Knit Wrist**

- › Neoprene coated
- › Cotton jersey lining
- › Knit wrist
- › Single dip



**2087L**  
sizes: L

**Neoprene 12" Gauntlet Cuff**

- › Neoprene coated
- › Cotton jersey lining
- › 12" gauntlet cuff
- › Single dip



**2088L**  
sizes: L

**Neoprene Elbow Length Gauntlet Cuff**

- › Neoprene coated
- › Cotton jersey lining
- › Gauntlet cuff
- › Single dip



**2305**  
sizes: S, M, L, XL

**Single Pack Green Nitrile**

- › Green nitrile
- › Cotton flock lining
- › Embossed grip
- › 12" Gauntlet cuff



**P2305**  
sizes: M, L

**Two Pack Green Nitrile**

- › Green nitrile
- › Cotton flock lining
- › Embossed grip
- › 2 Pairs per bag



**2085L**  
sizes: L

**Nitrile Coated Safety Cuff**

- › Nitrile dipped
- › Cotton jersey lining
- › Actifresh® liner\*
- › Safety cuff



\* Actifresh® - Anti-Bacterial treatment



# CLC GARDENING

Our women's garden gloves have just the right combination of fit, style, and function. From our top-of-the-line goat skin driver and rose gloves to our suede safety cuff and string knit dipped gloves, we have a great product mix that is sure to meet the needs of even the most avid gardener. In addition, for a great spring garden promo, check out our sidewing merchandising display on page 44.





# #2231

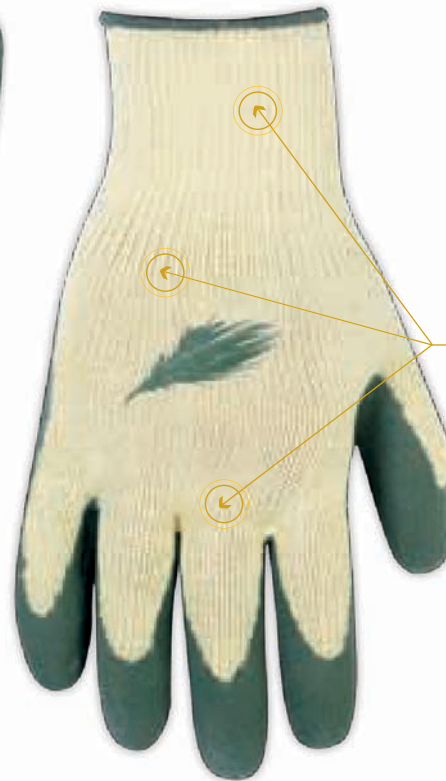
## LATEX DIP GLOVES

Crinkle latex palm and fingertips for added protection and grip.

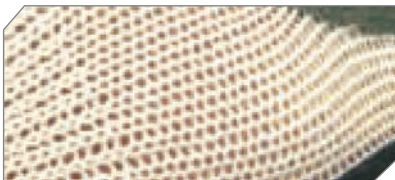


Elasticized wrist for better fit.

Cotton/polyester knit shell for comfort and breathability.



### » KEY CATEGORY FEATURES



Breathable cotton/polyester backs.



Crinkle latex palm and fingers for added protection and grip.



Durable suede leather palms for wear and added protection.



Reinforced finger tips.



Rubberized safety cuff for additional protection.



Snug knit wrist fit to keep dirt out.



Durable top grain goatskin.



Shirred wrist for a comfortable fit.



Reinforced palm for puncture resistance.



**2204**

**ONE SIZE**

**Premium Cotton**

- › Cotton/polyester knit
- › Reinforced fingertips
- › Comfortable knit wrist
- › Elastic on back hand



**2206**

**ONE SIZE**

**Premium Cotton with Gripper Dots**

- › Cotton/polyester knit
- › PVC dots for grip
- › Comfortable knit wrist
- › Elastic on back hand



**2211**

**ONE SIZE**

**Premium Cotton Jersey**

- › Cotton jersey
- › PVC dots for grip
- › Reinforced fingertips
- › Floral print



**2231**

**ONE SIZE**

**Latex Gripper**

- › Cotton/polyester shell
- › Latex dip palm
- › Elasticized wrist for snug fit
- › Crinkle finish on latex palm



**2233**

**ONE SIZE**

**Nitrile Gripper**

- › Nylon shell
- › Nitrile dip palm
- › Elasticized wrist for snug fit
- › Smooth finish on palm



**2235**

**ONE SIZE**

**Bamboo Latex Grippers**

- › Bamboo knit shell
- › Latex dip
- › Crinkle finish on palm
- › Elasticized wrist



**2239**

**ONE SIZE**

**Lightweight Garden Gloves**

- › Nylon shell
- › Polyurethane dip
- › Elasticized wrist
- › Floral print



**2257**  
ONE SIZE

**Split Cowhide Palm**

- › Split cowhide palm and fingers
- › Cotton back
- › Shirred wrist for fit



**2255**  
ONE SIZE

**Top Grain Pigskin Leather Palm**

- › Top grain pigskin palm and fingers
- › Cotton back
- › Shirred wrist for fit



**2245**  
ONE SIZE

**Top Grain Pigskin Palm Safety Cuff**

- › Top grain pigskin palm and fingers
- › Cotton back
- › Rubberized safety cuff



**2242**  
ONE SIZE

**Split Cowhide Safety Cuff**

- › Split cowhide palm and fingers
- › Cotton back
- › Rubberized safety cuff



**2260**  
ONE SIZE

**Top Grain Goatskin**

- › Top grain goatskin driver
- › Keystone thumb
- › Shirred wrist for fit



**2265**  
sizes: M, L

**Top Grain Goatskin Rose Gloves**

- › Top grain goatskin rose glove
- › Split cowhide extended gauntlet cuff
- › PVC reinforced palm and finger tips



**2271**  
ONE SIZE

**Women's Suede Leather Driver**

- › Split cowhide driver
- › Shirred wrist
- › Gunn cut
- › Leather binding





# CLC WINTER

We have a complete line of winter work and sport gloves. Most styles come with 3M® C40 Thinsulate™ or polyester/acrylic insulation which is great for those frosty winter mornings. We also offer corrugated dump bins, stackable tray boxes, siding displays, and clip strips to help you merchandise your winter glove selection; part of a perfect plan for an off-shelf seasonal promotion.



## WINTER SPORT/WORK GLOVES

3M® Thinsulate™ 60 gram insulation for warmth.

Reinforced palm for improved wear.

Adjustable strap for snug wrist fit.



Elastic cuff closure.

Heavy-duty cotton shell.

### » KEY CATEGORY FEATURES



3M Thinsulate linings for lightweight warmth.



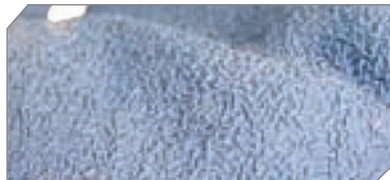
Water resistant bladder to keep your hands dry.



Adjustable gauntlet cuff to keep snow and debris out.



Warm red fleece lining.



Crinkle finish latex dip for extra grip on icy surfaces.



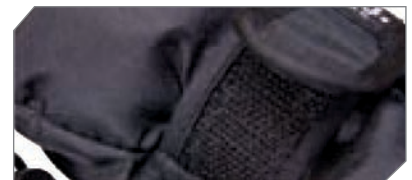
Snug knit wrist to keep snow and ice out.



PVC reinforced palm for durability.



Split cowhide palm for added durability.



Secure Hook and Loop closure.



**2097**

sizes: M, L, XL

**Ragg Wool Convertible Finger Mitten (closed & open)**

- › Fingerless with full thumb and pullover knit mitten
- › 3M Thinsulate™ Insulation, C40 gram
- › Suede leather palms and brushed lining for comfort



**2062**

sizes: L, XL

**Goatskin Snow Gloves**

- › Premium goatskin palm
- › Water resistant liner
- › 3M Thinsulate™ Insulation, C40 gram



**2094**

sizes: M, L, XL

**Winter Sport/Work Gloves**

- › Heavy duty cotton shell
- › Tough split cowhide palm
- › 3M Thinsulate™ Insulation, G60 gram



**2076**

sizes: L, XL

**Winter Split Cowhide Driver**

- › Split cowhide leather driver
- › Red fleece lining
- › Straight thumb
- › Shirred wrist with cotton binding



**2043**

ONE SIZE

**Winter Safety Cuff**

- › Premium split cowhide safety cuff
- › Water resistant liner
- › 3M Thinsulate™ Insulation, C100 gram
- › Wing thumb



**2056**

sizes: M, L, XL

**Winter Split Cowhide Driver**

- › Premium split cowhide lined driver
- › Gunn cut design
- › 3M Thinsulate™ Insulation, G80 gram
- › Keystone thumb



**2059**

sizes: M, L, XL

**Lined Top Grain Cowhide Driver**

- › Top grain cowhide lined driver
- › Gunn cut design with palm patch
- › 3M Thinsulate™ Insulation, G80 gram
- › Keystone thumb



**2078**

sizes: M, L, XL

**Winter Split Deerskin Driver**

- › Deer suede leather driver
- › Keystone thumb
- › 3M Thinsulate™ Insulation, G80 gram
- › Gunn cut design



**2079**

sizes: M, L, XL

**Winter Top Grain Deerskin Driver**

- › Premium top grain deerskin driver
- › Keystone thumb
- › 3M Thinsulate™ Insulation, G80 gram
- › Gunn cut design



**2013**

ONE SIZE

**Fleece Lined Cotton Jersey**

- › Heavy weight black lined jersey
- › Overlock knit wrist construction
- › Red fleece lining
- › Straight thumb



**2015L**

sizes: L

**Fleece Lined Brown Jersey**

- › Brown jersey with red lining
- › Gunn cut design
- › Open cuff
- › Straight thumb



**2034**

sizes: S, M, L, XL

**Thermal Lined Latex Gripper**

- › Latex dipped knitted warm gloves
- › Polyester/cotton/acrylic lining
- › Elasticized wrist
- › Color of binding indicates size



**2032**

sizes: M, L, XL

**Super Therm Gripper**

- › Latex dipped palm
- › Polyester/acrylic lining
- › Elasticized wrist
- › Color of binding indicates size



**2339**

sizes: M, L, XL

**Hi-Viz™ Cold Weather Latex Gripper**

- › Warm fleece lining
- › Crinkle finish on palm
- › Elasticized wrist
- › Color of binding indicates size



**2077L**

sizes: L

**Black Ski Glove**

- › Black nylon ski glove
- › Adjustable wrist closure
- › 3M Thinsulate™ Insulation, C40 gram
- › Reinforced palm



**2071**

sizes: M, L, XL

**Lined Fleece Gloves**

- › Micro polar fleece
- › PVC reinforced palm
- › Water resistant liner
- › 3M Thinsulate™ Insulation, C40 gram



**2075**

sizes: M, L, XL

**Fleeced Lined Gloves**

- › Warm fleece lining
- › Sport/Snow glove
- › Reinforced durable palm
- › Adjustable wrist closure



# CLC AUTOMOTIVE

High dexterity and disposable automotive gloves are becoming a fast-growing segment. Our CLC Pit Crew line can help you jump-start your mechanic glove business. We offer four high dexterity mechanic's glove styles and a number of disposable glove options. Our Pit Crew line is made using the same high quality materials and construction techniques as our Flex Grip line.





## PIT CREW™ MECHANIC'S GLOVES

Synthetic leather palm material for increased abrasion and tear resistance.

Neoprene cuff helps keep debris out.

Stretch spandex for flexibility and fit.

Wing closing wrist strap for easy adjustments and closure.

Padded knuckle and palm for extra comfort.

### » KEY CATEGORY FEATURES



Durable synthetic leather palms.



Comfortable hook and loop closure over elastic wrist.



Reinforced, padded knuckle area.



Easy on and off.



Durable PVC palm to resist corrosive battery material.



Terry-wipe thumb helps gently remove sweat or debris from face.



Heavy weight 6 mil nitrile – ideal for automotive applications.



Comfortable neoprene wrist.



Moisture wicking spandex on the back for breathability and light weight.



**217**

sizes: M, L, XL

**Speed Crew™**

- › Synthetic palm material
- › Reinforced thumb panel
- › Elastic wrist cuff
- › Stretch spandex



**205B**

sizes: M, L, XL

**Engine Crew™**

- › Reinforced thumb panel
  - › Stretch spandex
  - › Synthetic leather
  - › Wing closing wrist strap
  - › Padded knuckle and palm
- 205R** - Red  
**205N** - Navy



**220**

sizes: M, L, XL

**Pit Crew™**

- › Wing closing wrist strap
- › Padded knuckle and palm
- › Synthetic leather
- › Stretch spandex
- › Neoprene cuff



**238**

sizes: M, L, XL

**Power Crew™**

- › Reinforced thumb panel
- › Stretch spandex
- › Synthetic leather
- › Wing closing wrist strap
- › Padded knuckle and palm
- › TPR Finger pads
- › Terry cloth thumb wipe



**H2033L**

ONE SIZE

**Oil Change Gloves**

- › Nitrile palm and fingertips
- › Available on clip strip of 12 only
- › Durable knit nylon shell



**H2139L**

ONE SIZE

**Battery Change Gloves**

- › PVC palm and fingertips
- › Available on clip strip of 12 only
- › Durable knit nylon shell



**2331PC**  
ONE SIZE

**Nitrile Disposable Gloves**

- › 4 Mil. industrial grade
- › Rolled wrist
- › 10 Nitrile disposable pre-powdered gloves per bag



**2332PC**  
ONE SIZE

**Nitrile Disposable Gloves**

- › 4 Mil. industrial grade
- › Rolled wrist
- › 2 Nitrile disposable pre-powdered gloves per bag



**2328PC**  
ONE SIZE

**Latex Disposable Gloves**

- › 5 Mil. industrial grade
- › Rolled wrist
- › 10 Latex disposable pre-powdered gloves per bag



**2336**  
sizes: M, L, XL

**Nitrile Disposable Gloves**

- › 6 Mil. thickness
- › Rolled cuff
- › Textured finish
- › 8 Gloves per bag



**2337**  
sizes: M, L, XL

**Black Nitrile Disposable Box**

- › 6 Mil. thickness
- › Rolled cuff
- › Textured finish
- › 100 Gloves per box



## MERCHANDISERS

We're very focused on in-store merchandising support. We understand our customers and the necessity of making work gloves appealing and accessible. We have a number of different displays designed to capture the attention of the consumer. Take a moment to check out all our eye-catching, easy-to-use displays. And if space is a problem, we have clip strips available which make merchandising a snap, or should we say "a hook."

### 2, 3, 4 & 6 PRONG COUNTER DISPLAYS

- › Versatile design can stand on a counter top or hang from a peg board
- › Full color header card
- › Call us for available Flex Grip assortments
- › Sturdy design maintains good looks



**C1083**

- › 10"W x 9"D x 20.5"H
- › Rack Only



**C1082**

- › 15"W x 9"D x 20.5"H
- › Rack Only



**C1081**

- › 20"W x 9"D x 20.5"H
- › Rack Only



**C1084**

- › 15"W x 9"D x 34.5"H
- › Rack Only

### SPINNER RACK

- › Turns smooth to show all Flex Grip Gloves
- › Full color header card
- › Sturdy design maintains good looks
- › Saves valuable wall space



**C1085**

- › 21"W x 21"D x 63"H
- › Rack Only

### CLIP STRIPS

- › Generates impulse sales from otherwise unprofitable spaces
- › Preloaded for easy set up
- › Easy way to cross-merchandise
- › Display your hottest, highest turn items
- › Features and benefits are highlighted in eye-catching, full color photos
- › Call us for available items



**C1030**

- › Clip strip only

## 6 & 9 PRONG HYBRID GLOVES DISPLAYS

- › Versatile design can stand on a counter top or hang from a peg board
- › Call us for available assortments

- › Full color header card
- › Sturdy design maintains good looks



**HYR23**

- › 18"W x 12.5"D x 31"H
- › 2 X 3 Counter or peg board rack
- › Holds 36 pairs
- › Rack only



**HYR33**

- › 18"W x 13"D x 57"H
- › 3 X 3 Floor Rack
- › Holds 54 pairs
- › Rack only

## QUARTER PALLETS

- › Display box only
- › Attention-getting sales tool for high traffic areas
- › Our biggest point of sale weapon for grabbing impulse shoppers
- › Call factory for available styles



**GSQP01**

- › 21.5"W x 15.5"D x 24"H
- › Box only

## STACKABLE DISPLAY BOXES

- › A versatile, stackable open-tray display box
- › Merchandise work gloves in high-traffic areas, shelf, aisle or counter top

- › Stack them on the floor, arrange them on a pallet or create an end-cap
- › Designed to hold 24 to 96 pairs of work gloves



**GD016N**

- › 20"W x 12.75"D x 10.75"H
- › Box only

## SIDEWING DISPLAY

- › A versatile, corrugated merchandising display
- › Freestanding when ordered with base
- › Order without base to hang it from pegboard or racking
- › Designed to hold 48 to 108 pairs of work gloves



**GRO2WK**

- › 14.5"W x 4"D x 60"H ( Without base )
- › GD02GD – With Garden Header
- › GD02WK – With Work Header
- › GD02WT – With Winter Header
- › GD02CH – With Chemical Header



**GRO3GD**

- › 14.5"W x 13.5"D x 71.5H ( With base )
- › GD03GD – With Garden Header
- › GD03WK – With Work Header
- › GD03WT – With Winter Header
- › GD03CH – With Chemical Header



## 2 and 4 FOOT METAL RACKS DISPLAY

- › Helps preserve valuable wall space
- › Attractive full-color graphic side panels and header
- › Designed to thrive in high traffic areas
- › Sturdy steel construction frame, pegs with scan plates



**GRO1WK**

- › 27.5"W x 13"D x 78"H
- › Rack Only



**GRO2WK**

- › 55"W x 13"D x 78"H
- › Rack Only

# INDEX

SKU#	PAGE#
123 (M - XL)	4
124 (M - XL)	4
125 (S - XXL)	4
126 (M - XL)	9
128 (M - XL)	5
130 (S - XXL)	5
133 (M - XL)	7
135 (M - XL)	5
140 (M - XL)	8
145 (S - XXL)	5
149 (M - XL)	7
151 (M - XL)	9
160 (M - XXL)	8
165 (L - XXL)	7
173 (M - XL)	9
175 (M - XL)	9
177 (M - XL)	7
190 (M - XL)	8
205B (M - XL)	40
205N (M - XL)	40
205R (M - XL)	40
217 (M - XL)	40
220 (M - XL)	40
238 (M - XL)	40
260 (M - XL)	12
265 (M - XL)	12
270 (M - XL)	12
273 (M - XL)	13
275 (M - XL)	12
280 (M - XL)	12
285 (M - XL)	12
2000	19
2002	21
2004	21
2005	19
2006	21
2008	20
2009	21
2010	19
2011	21
2012	21
2013	37
2015L	37
2016	22
2018L	21
2019B	19
2020	22
2021 (L - XL)	22
2022	22
2026 (M - XL)	20
2027 (M - XL)	20
2028B	19
2029 (M - XL)	19
2030 (S - XL)	20

SKU#	PAGE#
2031 (K - XL)	20
2032 (M - XL)	37
2033 (K - XL)	20
2034 (S - XL)	37
2035 (M - XL)	19
2036	17
2037	17
2040 (M - XL)	17
2042	18
2043	36
2046	17
2046B	17
2047	18
2048 (L - XL)	18
2049B	18
2050	18
2051 (M - XL)	18
2052	18
2053 (S - XXL)	16
2054 (M - XL)	16
2055 (M - XL)	16
2056 (M - XL)	36
2057 (M - XL)	16
2058 (M - XL)	17
2059 (M - XL)	36
2060 (M - XL)	16
2061 (L - XL)	13
2062 (L - XL)	13
2063 (M - XL)	16
2064 (M - XL)	16
2065 (S - XL)	16
2066 (M - XL)	13
2067 (M - XL)	13
2069 (M - XL)	16
2071 (M - XL)	37
2075 (M - XL)	37
2076 (L - XL)	36
2077L	37
2078 (M - XL)	36
2079 (M - XL)	37
2080L	28
2082L	28
2083L	28
2084L	28
2085L	29
2086L	29
2087L	29
2088L	29
2089L	19
2090	17
2091	17
2094 (M - XL)	36
2097 (M - XL)	36
2137 (M - XL)	20

SKU#	PAGE#
2150L	18
2204	32
2206	32
2211	32
2231	32
2233	32
2235	32
2239	32
2242	33
2245	33
2255	33
2257	33
2260	33
2265 (M - L)	33
2271	33
2300 (S - XL)	28
2305 (S - XL)	29
2308 (M - XL)	28
2312 (S - XL)	27
2314 (S - XL)	27
2316 (S - XL)	27
2318 (S - XL)	27
2320 (S - XL)	27
2322 (S - XL)	27
2325	27
2328	27
2328PC	41
2331	27
2331PC	41
2332PC	41
2333 (M - XL)	28
2336 (M - XL)	41
2337 (M - XL)	41
2339 (M - XL)	37
H2033L	40
H2139L	40
L123 (L - XL)	4
M125 (M - XL)	6
M173 (M - XL)	6
ML125 (L - XL)	6
P2030 (S - XL)	20
P2300 (S - L)	28
P2305 (M - L)	29
PK2005	19
PK2006	21
PK2007	21
PK2008	20
PK2014	20
PK2023	22
PK2044	17
PK2046	17
PK2047	18
PK2080	28
PK2083	28



[www.goclc.com](http://www.goclc.com)



©2010 Custom LeatherCraft Mfg. Co., Inc.  
South Gate, CA 90280

P. 800.325.0455 323.752.2221 F. 323.752.9429

Tools shown not included.

Product descriptions and specifications  
herein may change without notice.

Part# WGCT11